



# Sehome High School

Design Advisory  
Committee Eleventh  
Workshop

*May 10, 2016*



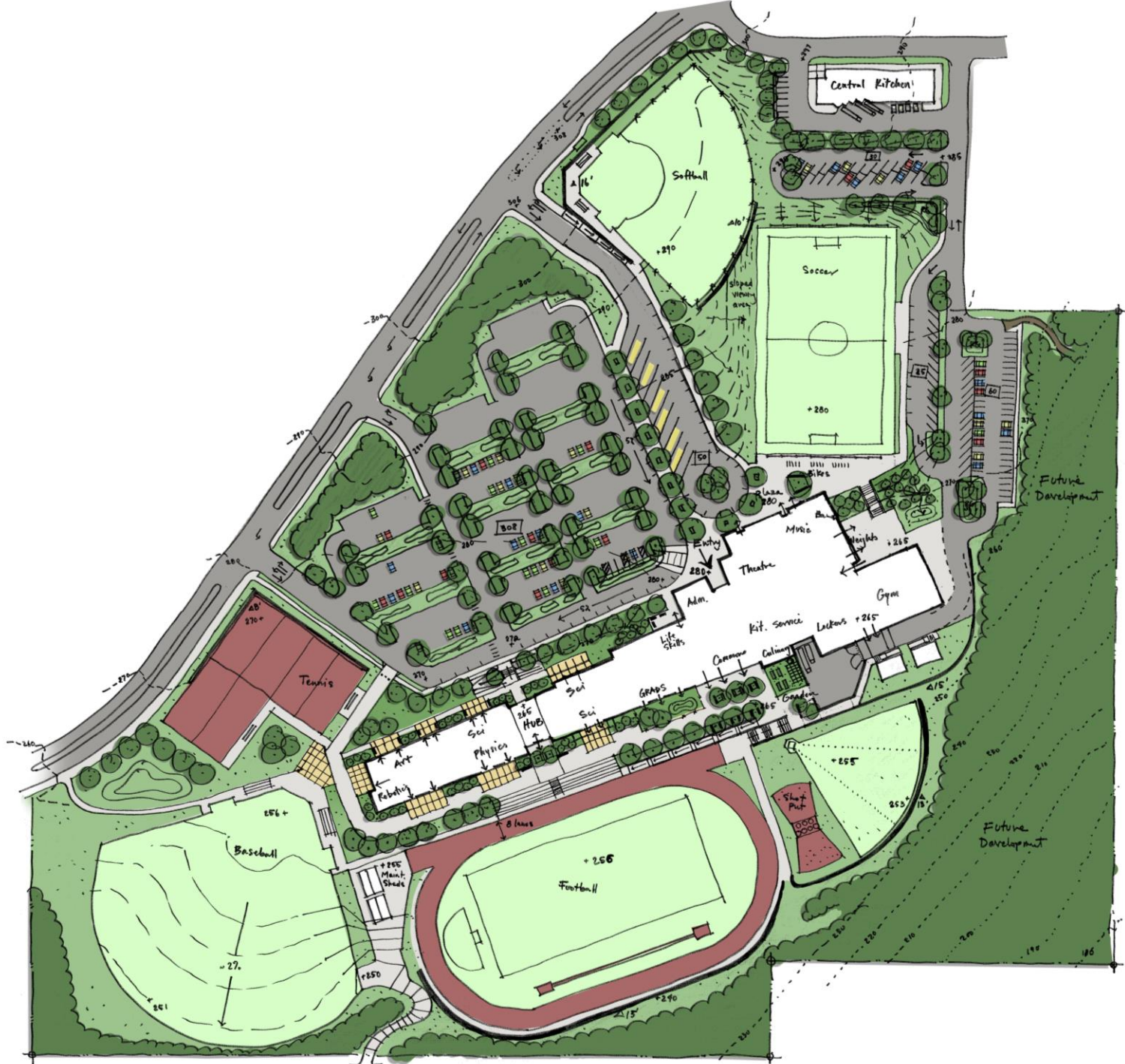
dawson

DYKEMAN

INSPIRING EVERYDAY SPACES



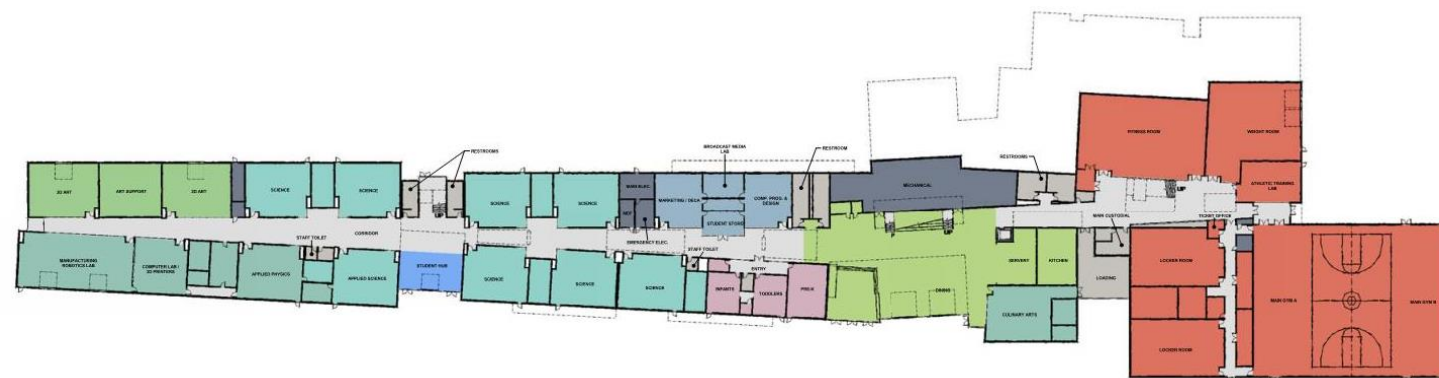
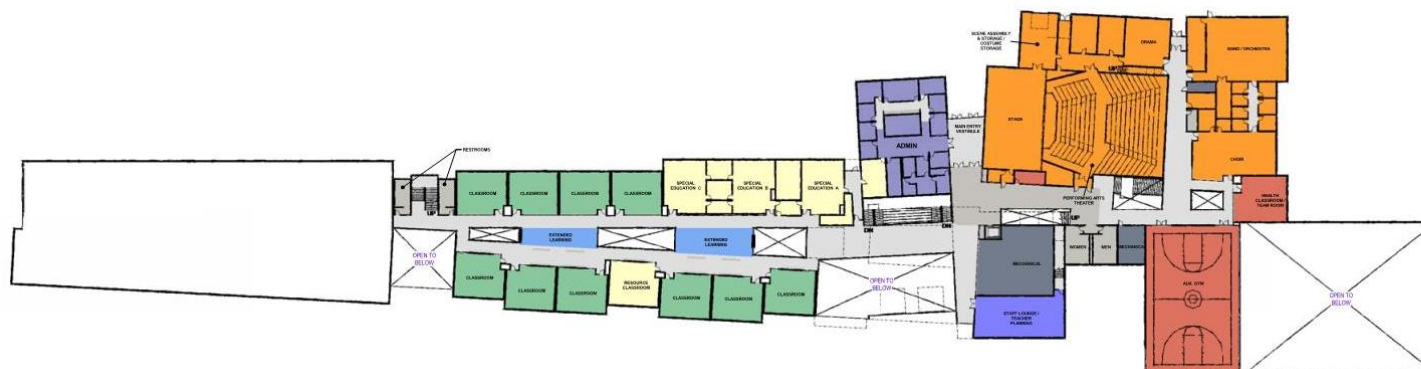
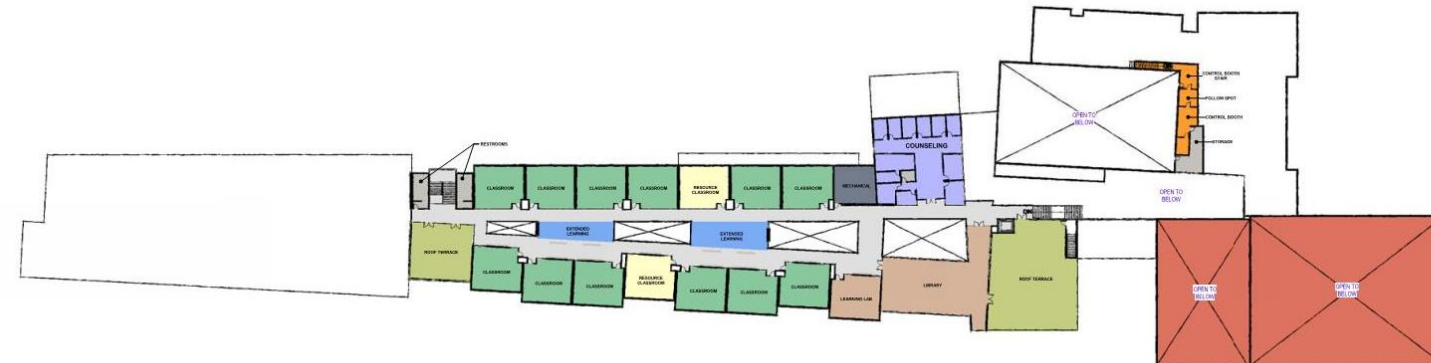




- THIRD FLOOR LEGEND**
- CIRCULATION
  - COUNSELING
  - EXTENDED LEARNING
  - GENERAL ED
  - LIBRARY
  - LIFE SKILLS
  - MECH. / ELEC.
  - OUTDOOR SPACE
  - PE
  - PERFORMING ARTS
  - SUPPORT

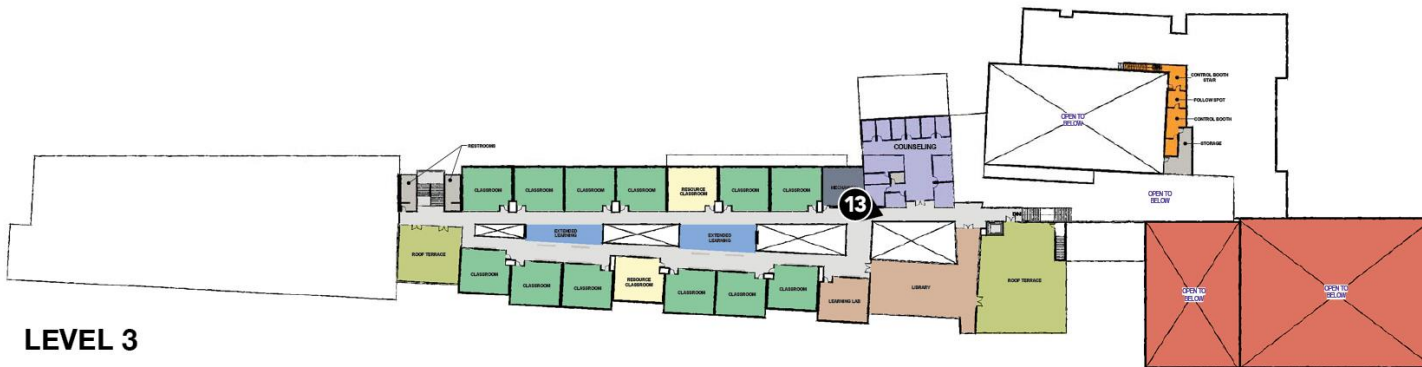
- SECOND FLOOR LEGEND**
- ADMIN
  - CIRCULATION
  - EXTENDED LEARNING
  - FACULTY
  - GENERAL ED
  - LIFE SKILLS
  - MECH. / ELEC.
  - NURSE
  - PE
  - PERFORMING ARTS
  - SUPPORT

- FIRST FLOOR LEGEND**
- BUSINESS
  - CIRCULATION
  - Circulation
  - COMMONS
  - CTE
  - EXTENDED LEARNING
  - GRADS
  - MECH. / ELEC.
  - PE
  - SCIENCE
  - SUPPORT
  - VISUAL ARTS





## LEVEL 3



- THIRD FLOOR LEGEND
- CIRCULATION
  - COUNSELING
  - EXTENDED LEARNING
  - GENERAL ED
  - LIBRARY
  - LIFE SKILLS
  - MECH. / ELEC.
  - OUTDOOR SPACE
  - PE
  - PERFORMING ARTS
  - SUPPORT

## LEVEL 2



- SECOND FLOOR LEGEND
- ADMIN
  - CIRCULATION
  - EXTENDED LEARNING
  - FACULTY
  - GENERAL ED
  - LIFE SKILLS
  - MECH. / ELEC.
  - NURSE
  - PE
  - PERFORMING ARTS
  - SUPPORT

## LEVEL 1

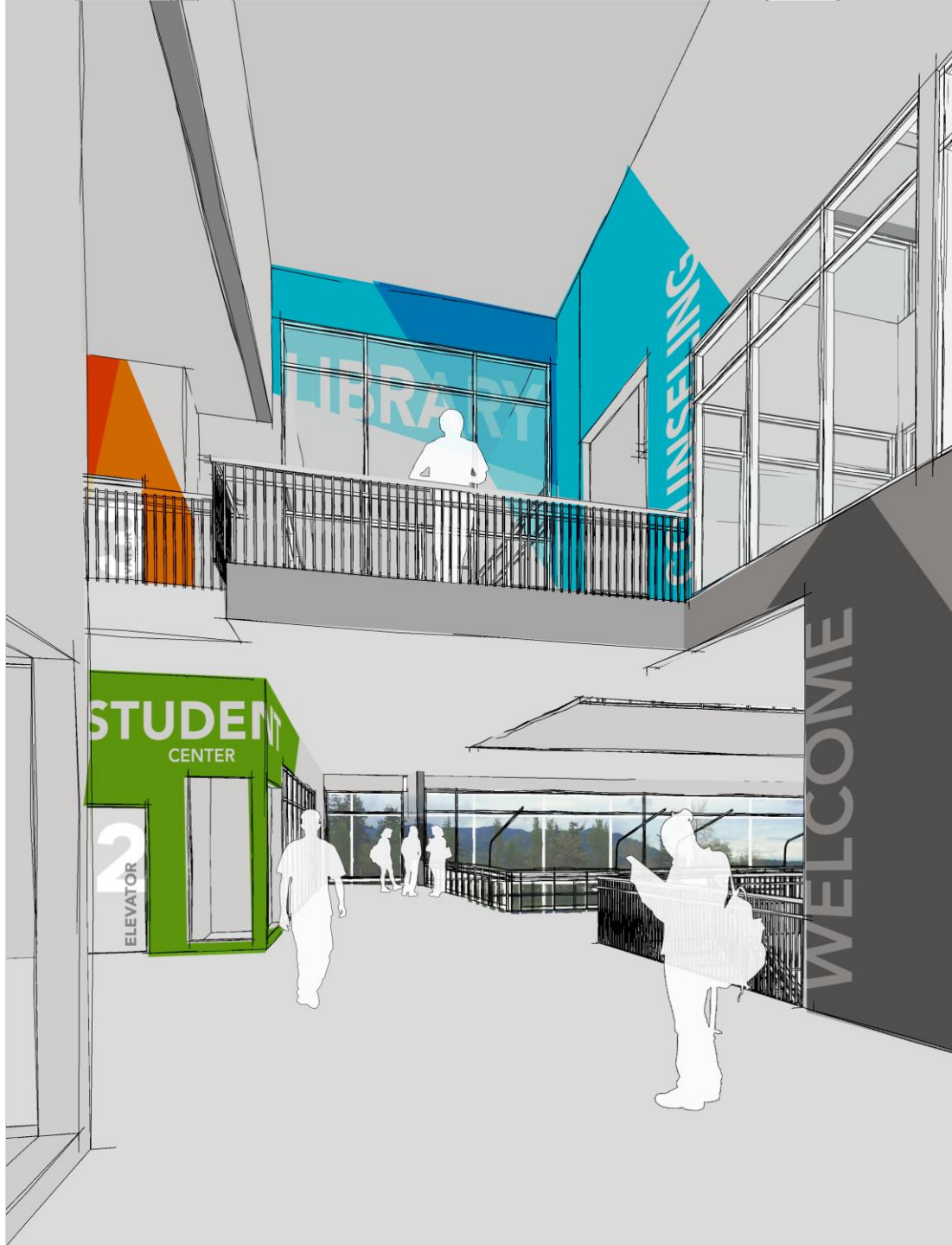


- FIRST FLOOR LEGEND
- BUSINESS
  - CIRCULATION
  - Circulation
  - COMMONS
  - CTE
  - EXTENDED LEARNING
  - GRADS
  - MECH. / ELEC.
  - PE
  - SCIENCE
  - SUPPORT
  - VISUAL ARTS





Inside front  
door at Main  
Entrance



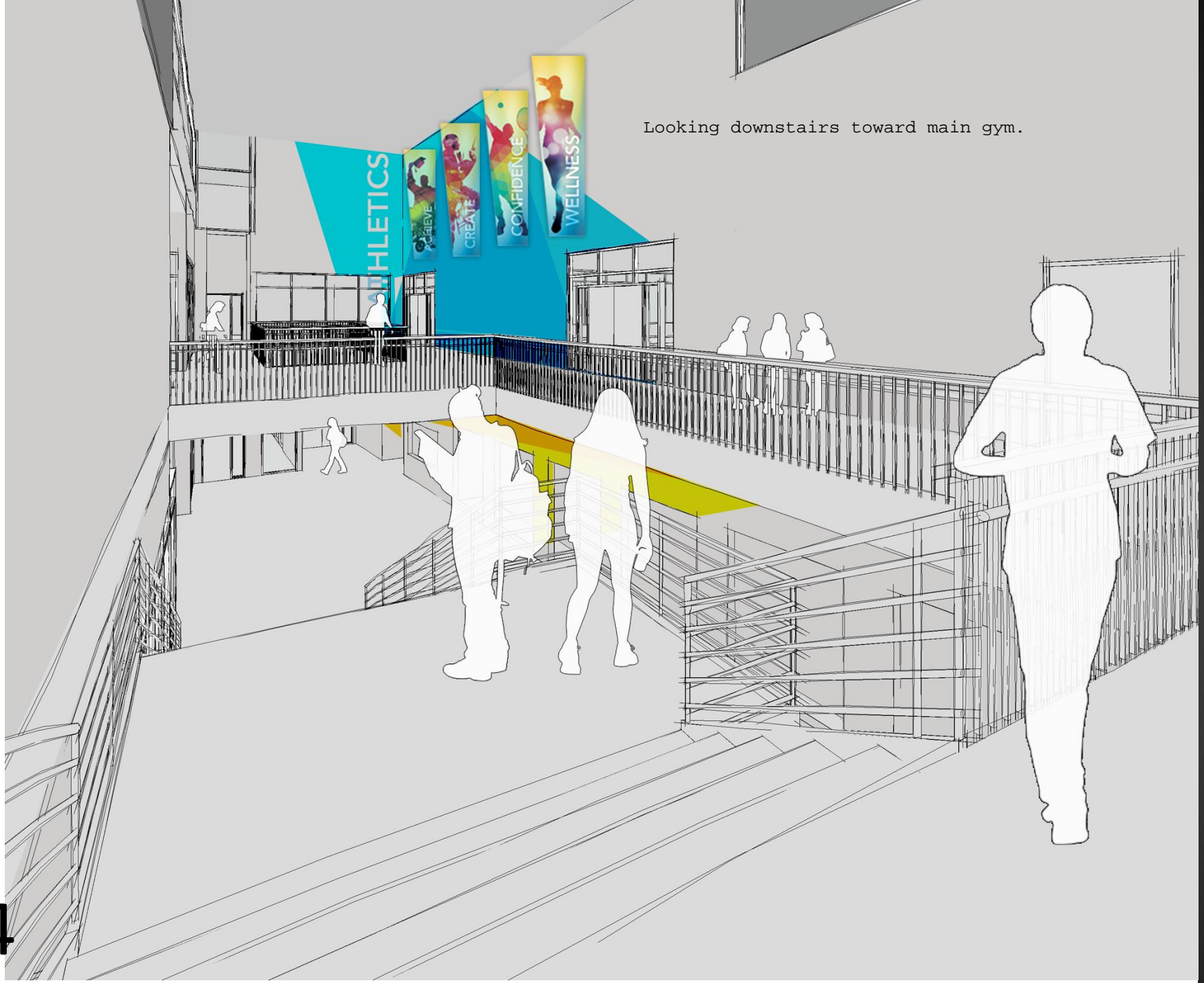
Entering Main Entrance - Stairs go down to Commons Area - view is of the Chuckanut Mts., looking south from main building.





Turning left at Main Entrance, this hall goes to Main Gym and Performing Arts Center.





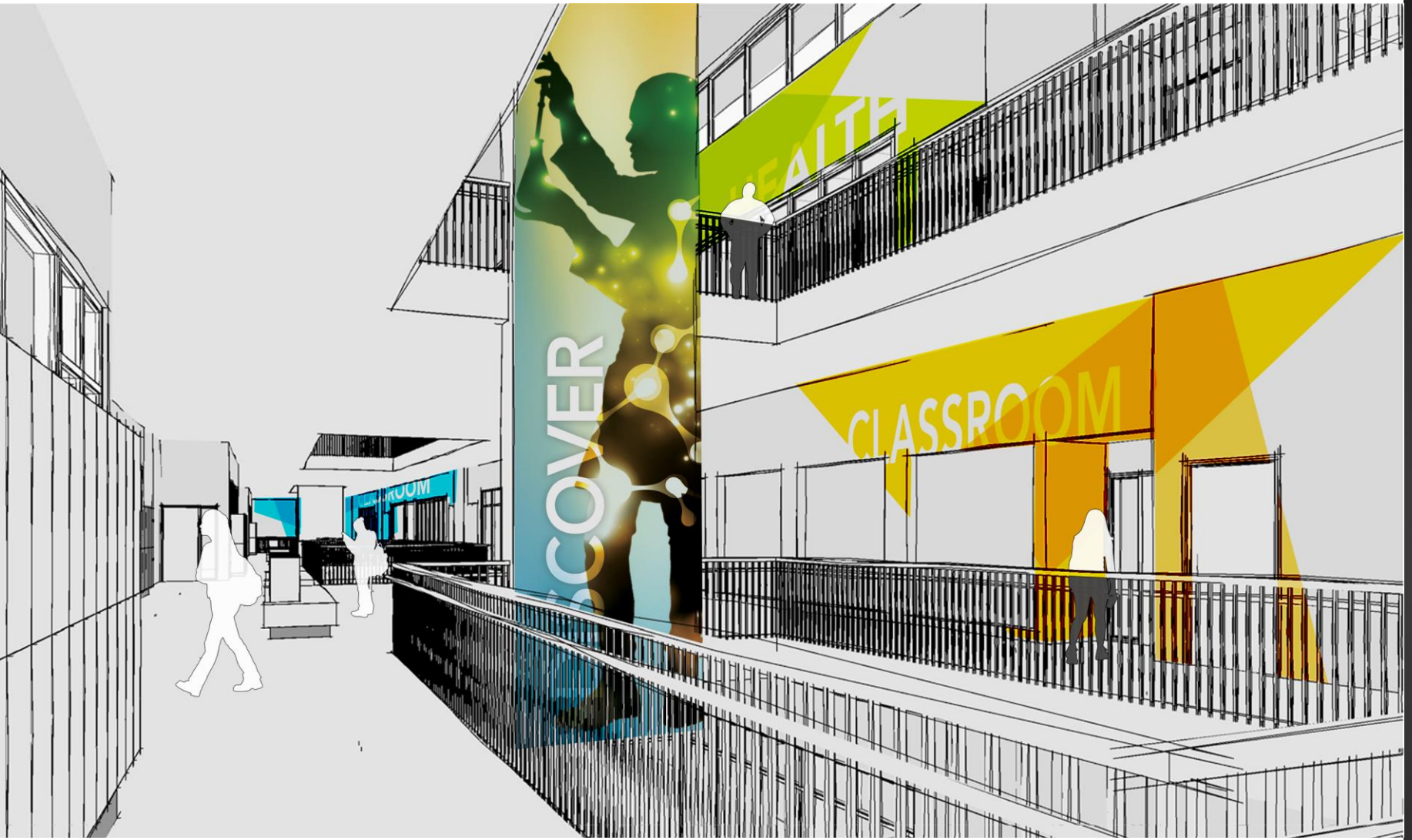
Looking downstairs toward main gym.



Upper Gym looking down at main gym.



2nd floor hallway.

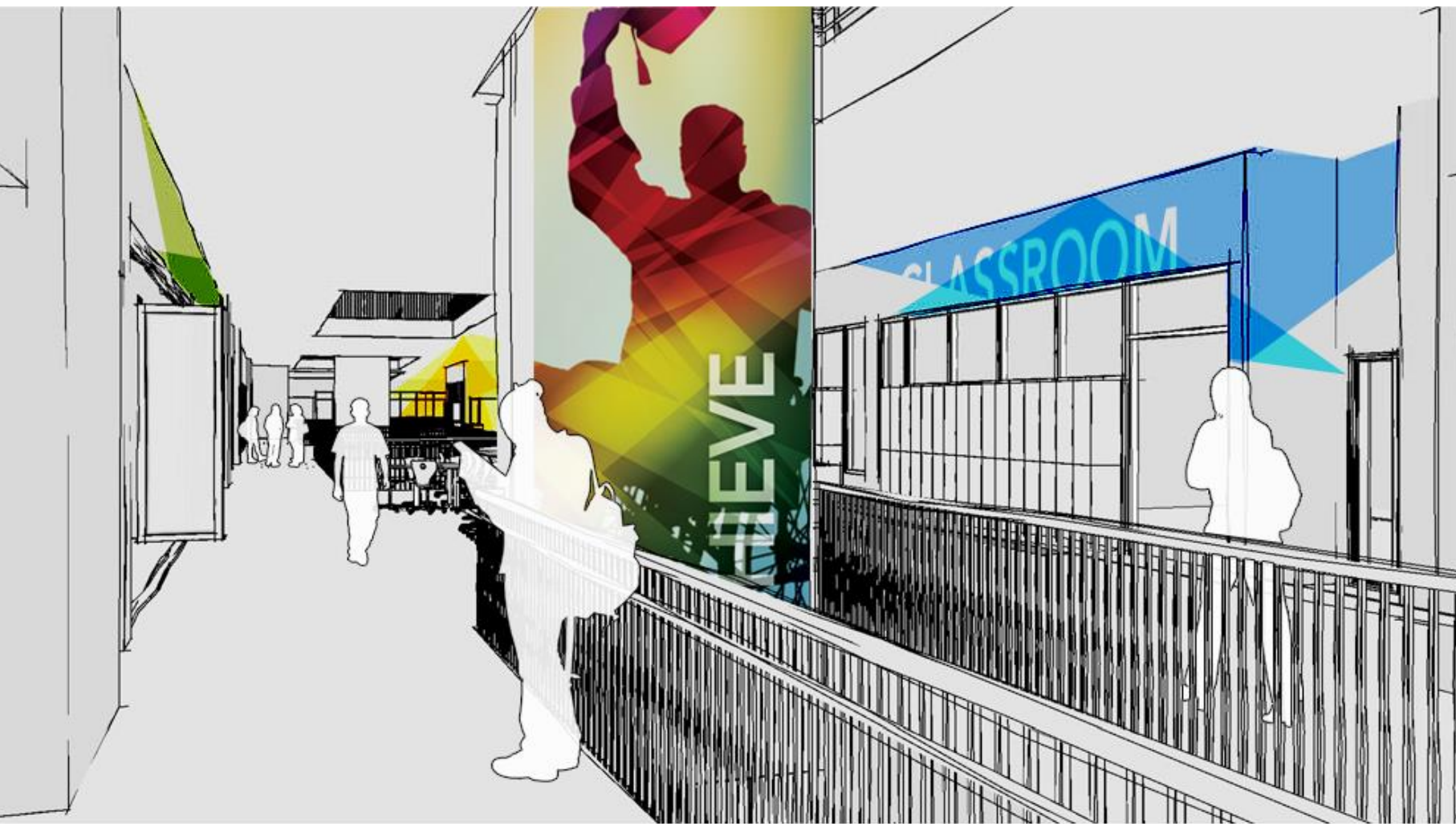




Looking down hallway from Commons.



Looking down hallway on 2nd floor







Student Commons, looking NE





Student Commons, looking SW.

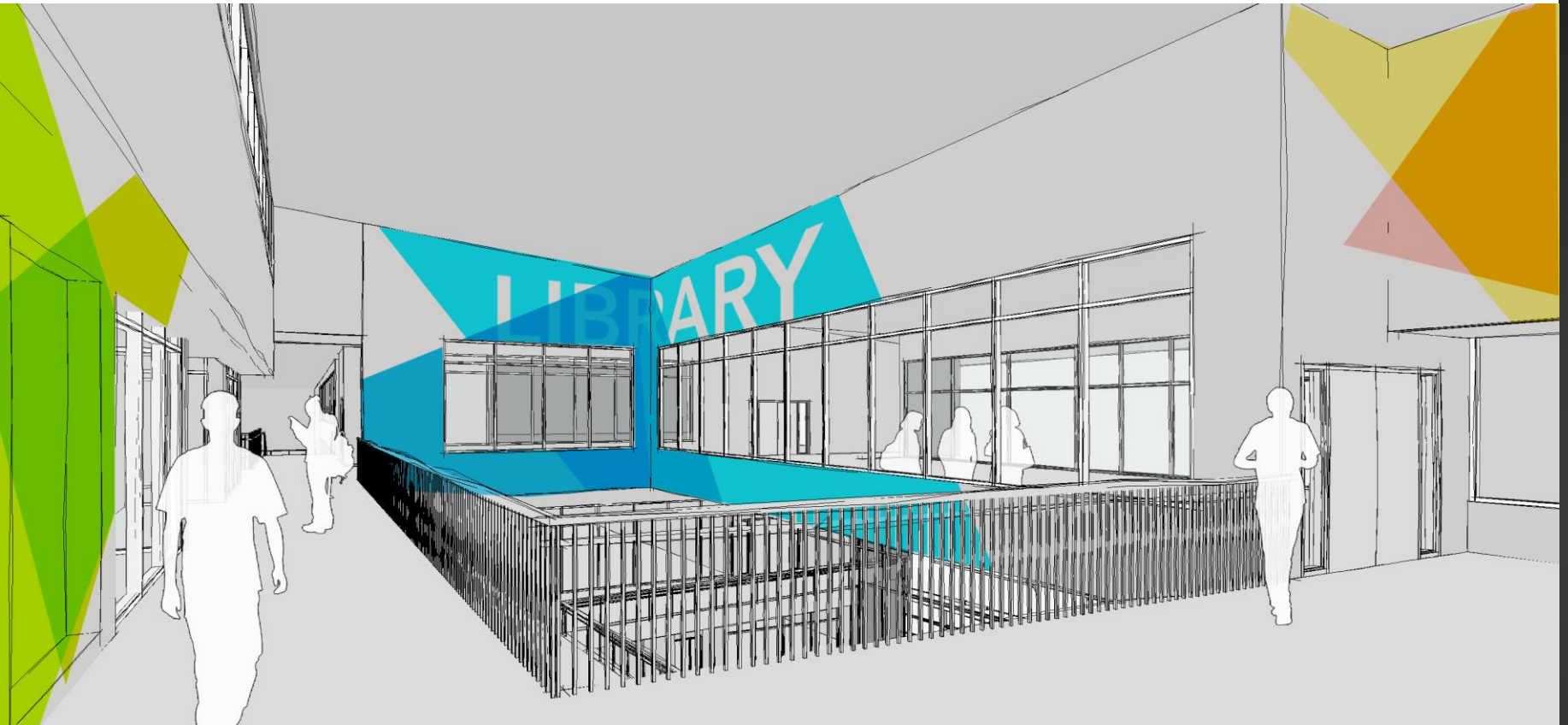


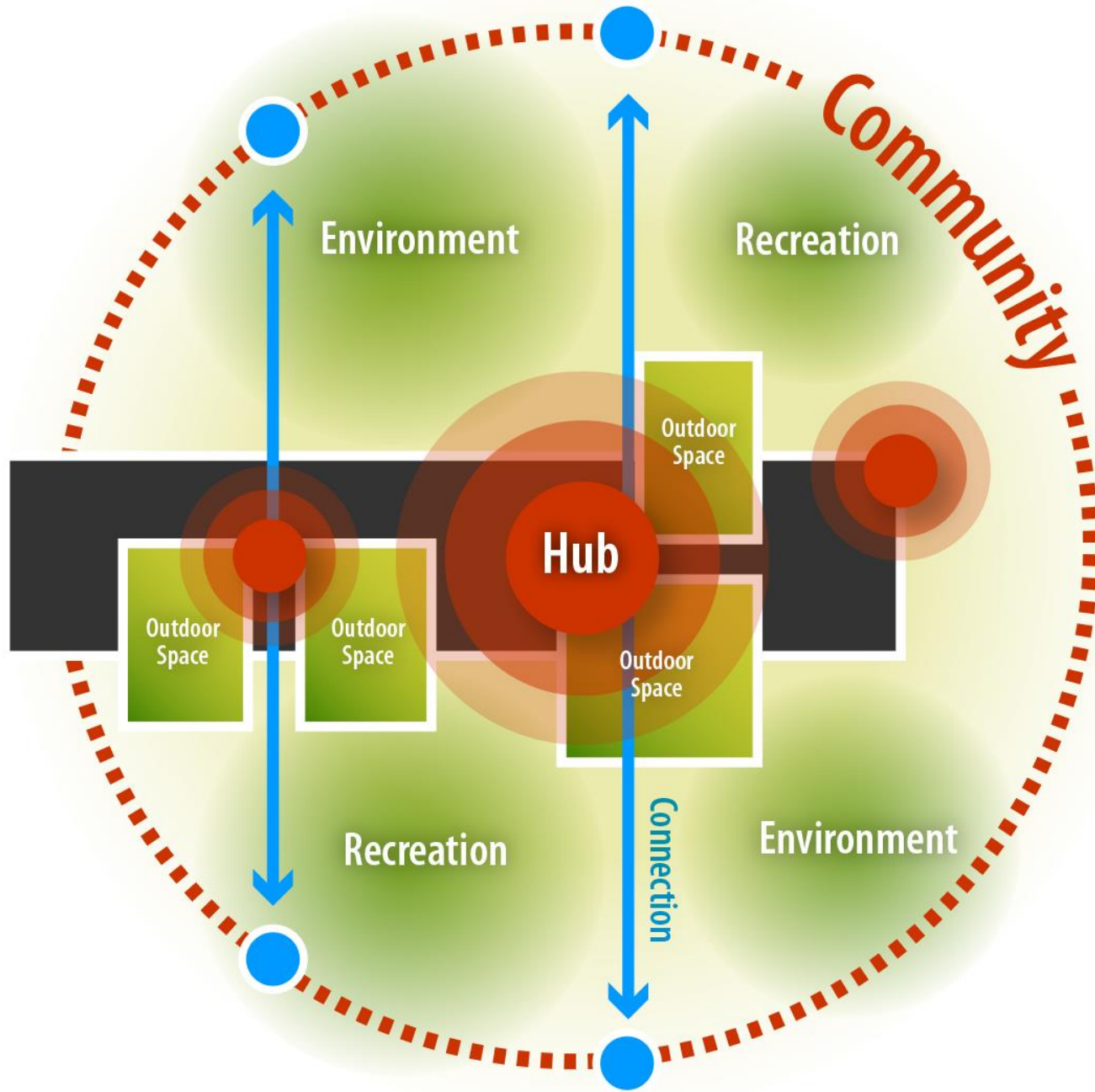
Main Gym area.





3rd Floor Library.





























SOUTH FAÇADE – VIEW FROM TRACK









# Next Meeting

- **Community Meeting**
- **Thank you!**



**dawson**

